

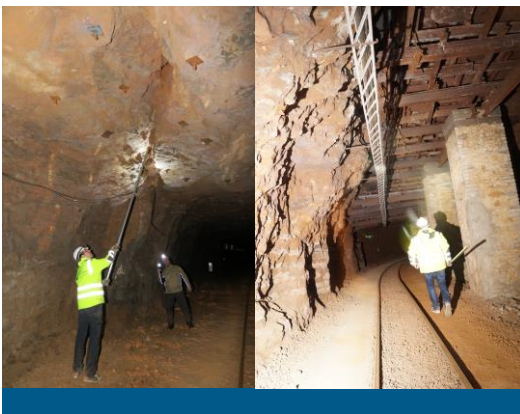
Project: Visitor Mine, Rumelange
Location: Rumelange, Luxembourg
Year: since 2016

Safety Expertise of former iron ore mine (once a year), actually used as visitor mine with exhibition pieces



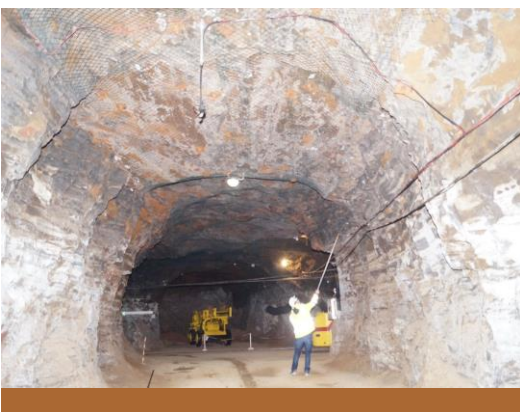
PROJECT DESCRIPTION

The visitor mine „Musée National des Mines de Fer Luxembourgeoises“ is located within the village Rumelange in Luxembourg, approximately 30 Kilometer south of the capital. The iron ore mine was connected to the ore mines „Kirchberg“ und „Walert“ and opened for visitors in 1973. Between 1982 and 1984 the show mine was extended. In the following years, especially between 1997 and 2001, more tunnels and galleries were opened to the public. Due to the public use, the mine needs to be inspected annually in the areas that are open to the public.



PROJECT FACTS

- 2,8 km long main gallery, excavated from 1880 to 1920, accessible by train over the whole length
- Numerous additional tunnels, galleries and caverns
- Approximately 10.000 visitors yearly
- 1 km long section accessible by feet for visitors
- Existing supporting system by anchors, nets and partly shot concrete
- Numerous exhibits and machines, ranging from 1870 to 1997



OUR SERVICE

- Inspection of the mine, including public and non-public areas
- Clearing of tunnel roof and inspection of the installed safety constructions
- Safety-related report for the existing condition, including recommendation for safety reinstatement and measures to be implemented
- Realisation of a 3D-model of the tunnel and galleries for illustration purposes